

# MATU

Middleware Assisted Take-Up Service  
For JISC Funded Early Adopters





## Eduserv

- a not-for-profit IT services group
- over 10 years experience in access management
- funds IT educational initiatives through the Eduserv Foundation
- contracted by the JISC to provide the MATU service.

# MATU's Objectives

- support JISC Core Middleware Project Early Adopters
- provide a central repository of:
  - information
  - advice
  - training
- scope future requirements for institutions adopting Shibboleth



# MATU Website

[www.matu.ac.uk](http://www.matu.ac.uk)



[Home](#) | [News](#) | [Events](#) | [Contact us](#) | [JISC](#) | [Eduserv](#)

search site  
type in a keyword

go...

## MATU - Middleware Assisted Take-Up Service

### Early Adopters

### Introduction to Access Management

### What is Shibboleth?

### How Shibboleth works

### Introduction to Federations

### What is SAML?

### Shibboleth myths & misunderstandings

→ [Documentation](#)

→ [Software downloads](#)

→ [Discussion lists](#)

→ [Training & support](#)

### Coming soon

→ [Guidance](#)

Welcome to the Middleware Assisted Take-Up Service, a new service designed to support Early Adopters in achieving their Shibboleth objectives. The service is a pilot project funded by [The Joint Information Systems Committee \(JISC\)](#).

Shibboleth forms a part of an organisation's Single Sign On (SSO) environment for access to protected web resources by facilitating the exchange of authorisation and authentication information between organisations and service providers. Shibboleth works in conjunction with an organisation's authentication system and user information databases and allows a service provider to make authorisation decisions based on that information.

#### The objectives of the service are:

- to provide a central repository of information, advice, training and support for [Shibboleth Early Adopters](#) within the UK until December 2006.
- to scope the future service requirements of HE and FE institutions wishing to adopt Shibboleth for institutional access management.

#### What does the service offer:

The service offers Early Adopters access to a range of resources including: documentation, guidance, software, discussion lists, as well as a service desk and a programme of training sessions and conferences. More details are available on our [What does this service offer?](#) page.

#### Contact us:

Should you have any comments regarding the new service, please feel free to contact us at [support@matu.ac.uk](mailto:support@matu.ac.uk).

#### Call for participation:

[Register](#) for the Early Adopters seminar from 1.30pm - 4.00pm on the 17th May 2005, Loughborough University. [More info...](#) **Registration closing 4pm Wednesday 11th May.**

To receive service updates and announcements, please add your email address in the box below.

Your email address:

#### More info

- [Core Middleware Programmes](#)
- [Other projects](#)
- [Related links](#)
- [Publications](#)
- [Glossary](#)
- [FAQ](#)

#### Latest news

**Internet2** has stated to MATU that a beta version of Shibboleth v1.3 is to be released very soon [more...](#)

**The MATU team** are hosting the reception at the forthcoming Core Middleware Programme Meeting [more...](#)

**Eduserv has been awarded the JISC contract** to establish a pilot Assisted Take-Up Service ([Press Release](#))

**MATU presentation** at eLearning Programme Meeting on 6th April, Birmingham. ([Slides](#))

**Questionnaire:** [Help us to understand your projects.](#)



# Activities to Date

- **Providing**
  - Advice
  - Technical Support
  - Help in solving problems
  - Training
  
- **Forming**

One-to-one relationships with projects:

  - London School of Economics (ShibboLEAP)
  - University of Essex (UK Data Archive (SAFARI))
  - University Liverpool (LSIP)
  - University of Nottingham (UNISA)
  - University of Bristol (Metalib)
  - University of Essex (Chimera)

# Shibboleth

- **Architecture** developed by the Internet2 middleware community
- Open source, standards-based protocol based on SAML (an OASIS standard)
- Neither an authentication nor authorisation scheme
- Term “Shibboleth” also used to refer to:
  - the **project** that has managed the development of the architecture and code
  - the **code package**, running on a variety of systems, that implements the architecture
- Internet2 Shibboleth Web pages
  - <http://shibboleth.internet2.edu/>
  - <http://www.switch.ch/aai/>



## Shibboleth

- Rationalises usernames, passwords, IP addresses, proxy servers etc.
- Offers a single solution to control resource access both internally and remotely
  - Eliminates separate identifiers/passwords for each protected resource
  - Provides greater security
  - Allows for secure, flexible, anonymous access to resources
  - Institution & individual user can control information released to SP
- Location independent
- Encourages increased take-up of licensed materials
- Allows for greater flexibility in controlling access.

# The components



**WAYF**

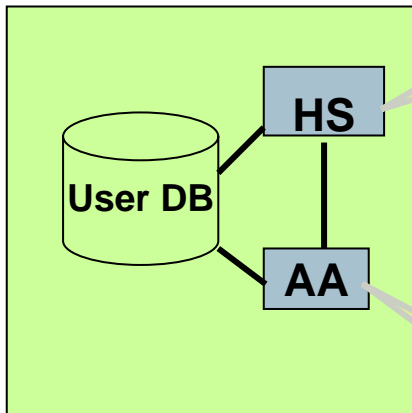
Where Are You From



User

## Identity Provider

### AuthN

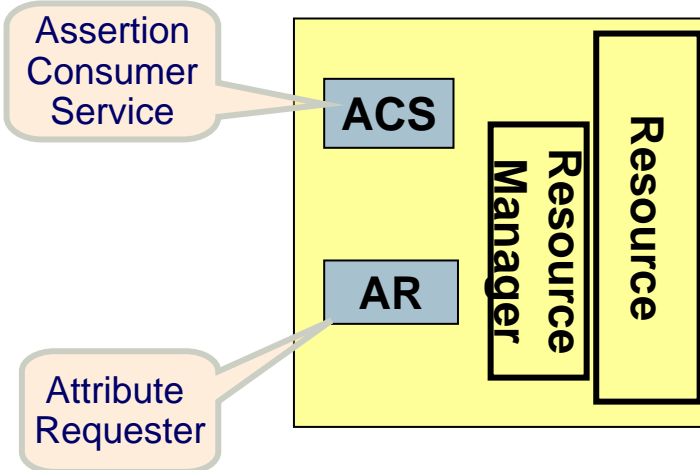


Handle Service

Attribute Authority


## Service Provider

### AuthZ

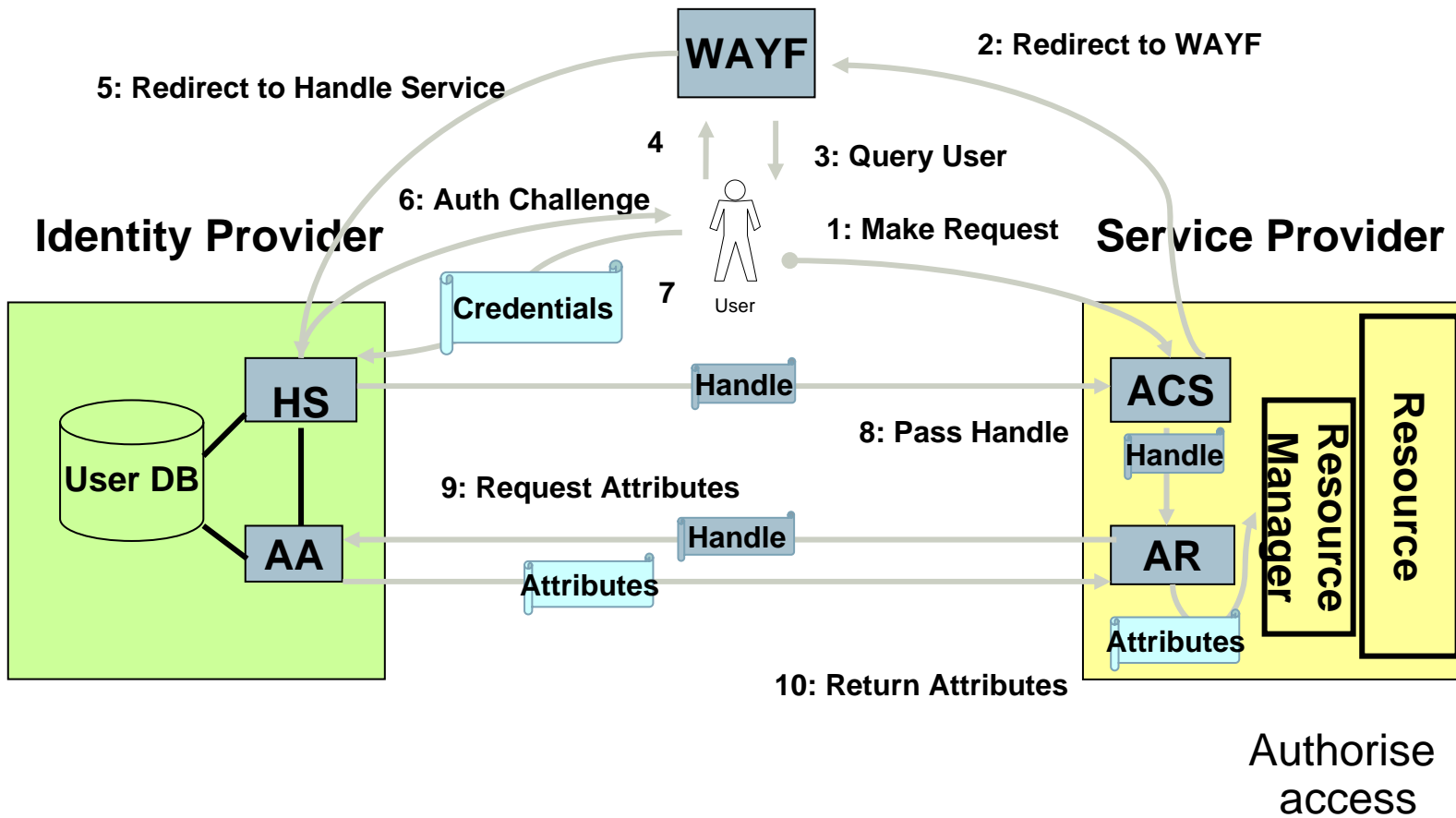


Assertion Consumer Service

Attribute Requester

 = Shib

# The Process





# Shibboleth/Athens Interoperability

- The Athens Federation

providing a governance framework for Athens registered organisations and online resources.

- The Athens Identity Manager (AthensIM)

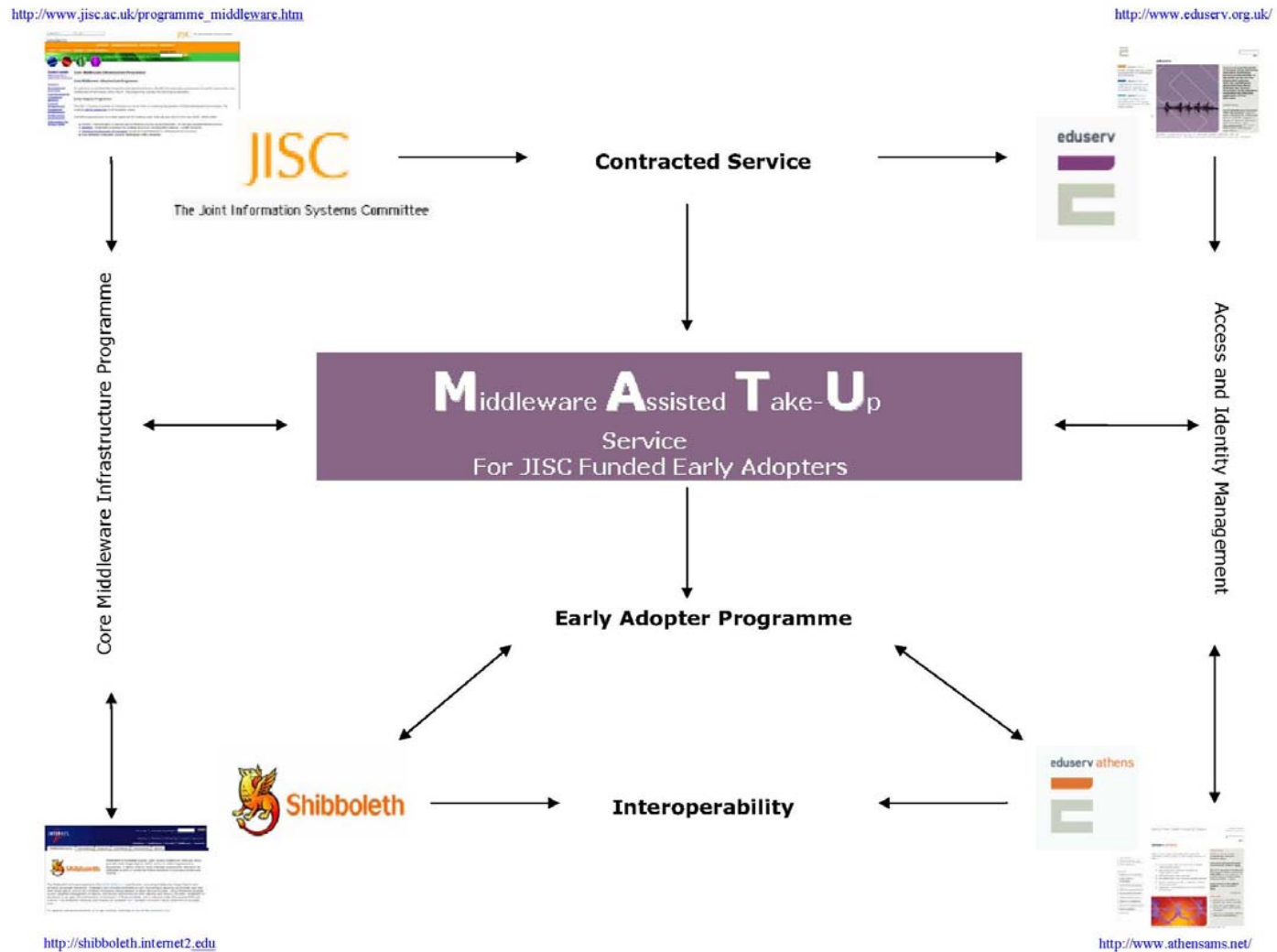
fully supported and standalone Shibboleth Identity Provider (origin) software.

- The Shibboleth to Athens Gateway

providing Shibboleth-enabled organisations access to Athens-enabled resources.



# Relationships





# Contact Us

Athens Office Ground Floor  
Queen Anne House  
11 Charlotte Street  
Bath  
BA1 2NE

Contact us at: [support@matu.ac.uk](mailto:support@matu.ac.uk)

View the MATU Website at: [www.matu.ac.uk](http://www.matu.ac.uk)



## What now?

- What are the implications of migrating to Shibboleth?
- What are the issues that have been thrown up by the current early adopter projects?
- What about users who have more than one institutional affiliation?